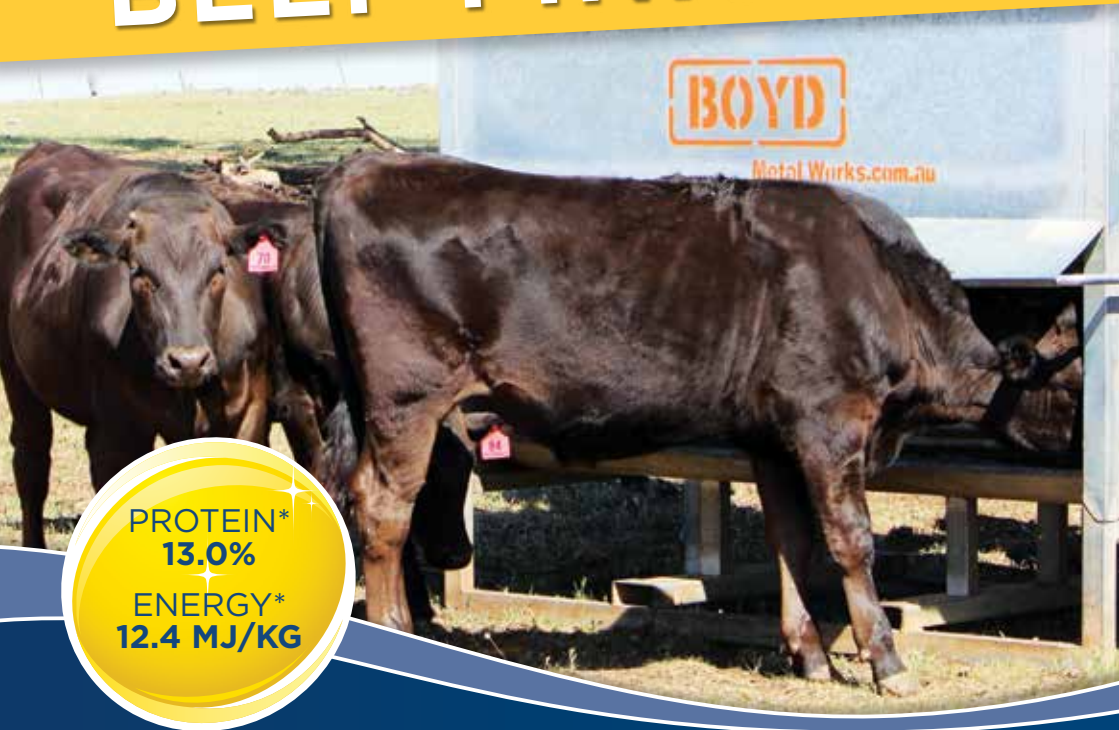


# MSM Stockfeeds



## BEEF FINISHER



Formulated for mature cattle heavier than 400kg liveweight

High energy, grain based pellet

Single source of supplementary protein, starch, minerals & vitamins



*\*Typical Analysis*



**MSM Beef Finisher is a high starch beef pellet which provides high energy and balanced protein formulated to drive meat production.**

## Specification (DM Basis) Typical Analysis

Metabolisable Energy	12.4MJ/kg
Moisture	12.8%
Crude Protein	13.0%
Starch	38.9%
NDF	27.7%
Calcium	0.98%
Phosphorus	0.63%
Magnesium	0.42%

# BEEF FINISHER

## INGREDIENTS: (may include)

Cereal Grains and Bran, Expeller Pressed Non-GM Canola Meal, Vegetable Protein Meals, Limestone, Bentonite, Salt, Sodium Bicarbonate, Acid Buf®, Bovatec®, Molasses, Syrup, Minerals, Trace Elements and Vitamins.

## FEEDING GUIDELINES:

- Always provide clean fresh water
- Pellets should not exceed 70% of total daily intake (approx. 2% of animal liveweight)
- Quality roughage source to be made available through either pasture, hay or straw
- Proper introduction process to be followed, with intake built up during the first 7-10 days to avoid sudden changes to the ration
- Best fed through lick feeders with the slide (single slide feeder) open 10-15mm to avoid gorging

## OTHER:

MSM Beef Finisher is a 6mm pellet available in bulk (min. 6MT order) and 1MT Bulka Bags.

- No urea (non-protein nitrogen) used in these pellets
- Cracked barley option available for slower starch release and more stable rumen pH
- Does not contain any Restricted Animal Material
- Should only be used for cattle
- Withholding periods Meat and Milk: NIL

*This product is suitable for beef cattle only. Pasture quality, climate, breed and age of the cattle will give different results. Please use the feeding method as a guide only and ensure pellets are introduced gradually.*

## MSM Stockfeeds

02 6364 5999 | 1 Dederang Street Manildra NSW 2865

feed.orders@msmmilling.com.au

[www.msmmilling.com.au](http://www.msmmilling.com.au)

 @MSMMilling  @msmstockfeeds  @MSMMilling  @MSMMilling

